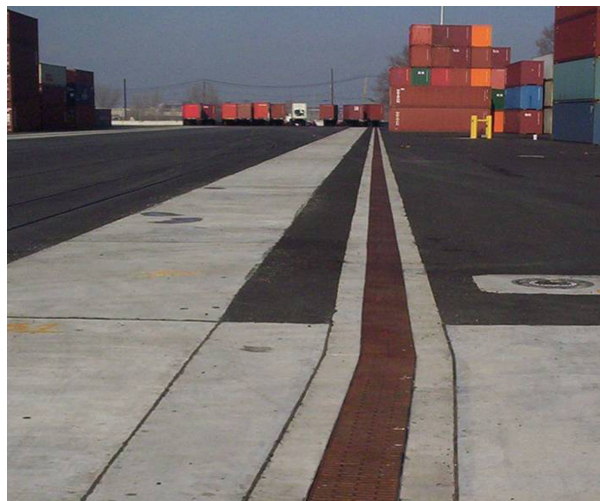
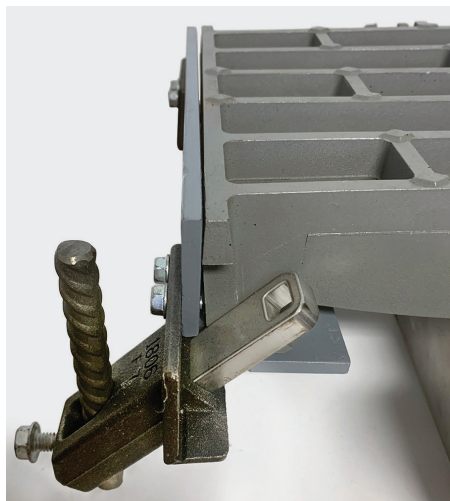


# TrenchFormer® MHD™-A

ENHANCED HEAVY DUTY TRENCH DRAIN FORMING SYSTEMS



TRENCHFORMER MHD-A



# The MHD-A™ Technology

ABT, Inc.'s **MHD-A** Trench Drain Systems provides a complete assembly of parts needed to handle applications found in airports, intermodal facilities, municipalities, roadways and the industrial marketplace. The **MHD-A** systems go far beyond a heavy-duty grate with their components and features that were designed to offer the best cost of ownership.

## MHD System Components

### 1 MHD-A Heavy Duty Ductile Iron Grates

The MHD-A's advanced grates design is engineered to provide both performance and appearance. The attractive design provides lighter weight for ease of maintenance and greater inflow area with no sacrifice in strength.

### 2 MHD-A Four Corner Non-Rigid Grate Retainer System

Utilizing the "Bar Lock System", both longitudinal and vertical retention are achieved. The non-rigid "Bar Lock System" eliminates the thermal induced stresses in the typical bolt down assemblies that cause concrete cracking. The bars do not become loose and back out as bolts do. Although four bars are used for retention, only one bar per grate must be removed for maintenance.

### 3 MHD-A Frame Design

The MHD-A System's ASTM A-36 Structural Steel frame maximizes strength and load transference into the encapsulation concrete. MHD does not utilize liners that create the failure liability by being sandwiched between the frame and concrete... Such liner systems propagate failures by their low compressive strength, creep, and thermal expansion properties.

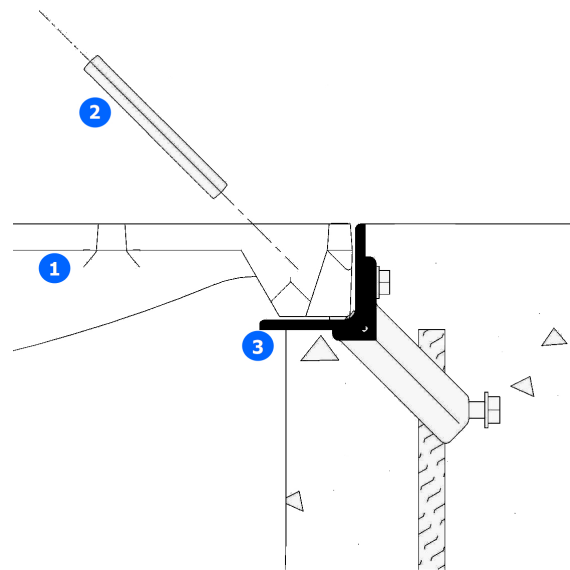
#### Design Flexibility

The MHD-A System's Expanded Poly Styrene (E.P.S.) formers can be configured for the designer's special flow and depth requirements. A large range of trench depths, slopes, profiles and configurations provides the designer with greater flexibility for challenging projects. Additionally, the system is pre-engineered and factory fabricated reducing the potential for construction error in the field.

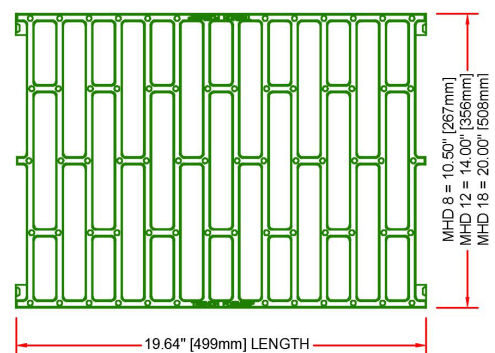
#### Inspectability & Constructability

The MHD-A Systems are easily inspected after concrete placement. Prior to service, inspection for voids below the frame can be observed and repaired. Such voids are concealed by other systems and will eventually lead to frame collapse. The MHD-A System installs easily and quickly as compared to traditional Cast-in-Place trenches.

## Components



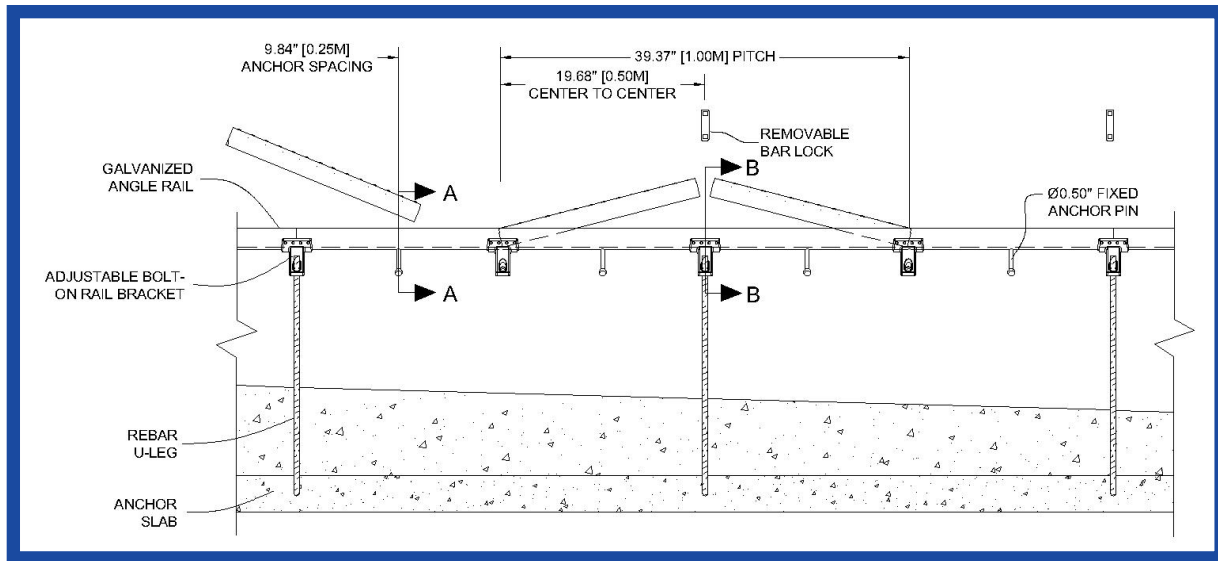
## Grate



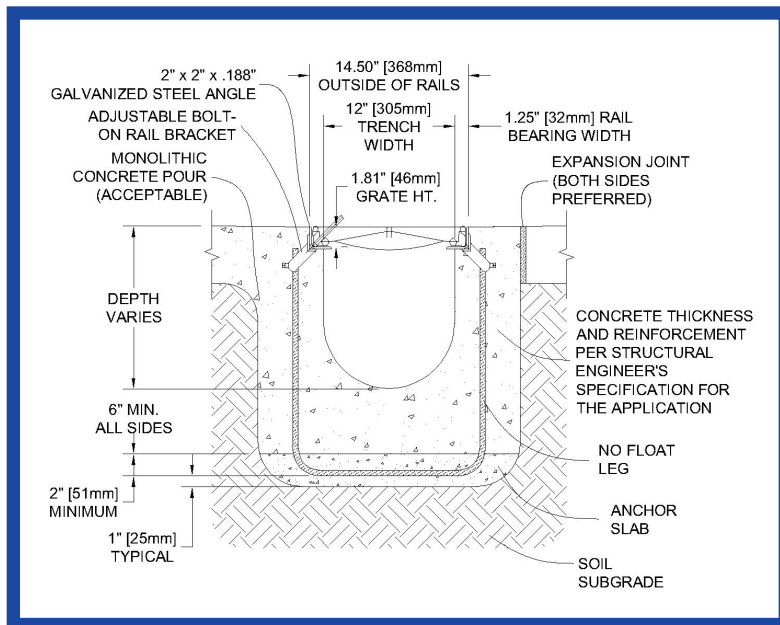
## The MHD-A™ Technical Data

- Grate Proof Strength — H-20 & H-25+, exceeds all AASHTO M306-10 regulations.
- Vertical Grate Restraint — 2,000 lbs.
- Longitudinal Grate Restraint — 10,000 lbs.
- Frames are ASTM A-36 Structural Steel
- All parts are made in USA and comply FHWA's "Buy America" policies
- For hydraulic capacity for specific conditions, drawings, specifications, and other information go to [www.abtdrains.com](http://www.abtdrains.com)

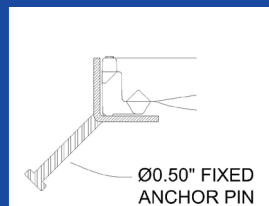
### Elevation View



### End Cross Section View



#### Fixed Pin



#### Removable Pin

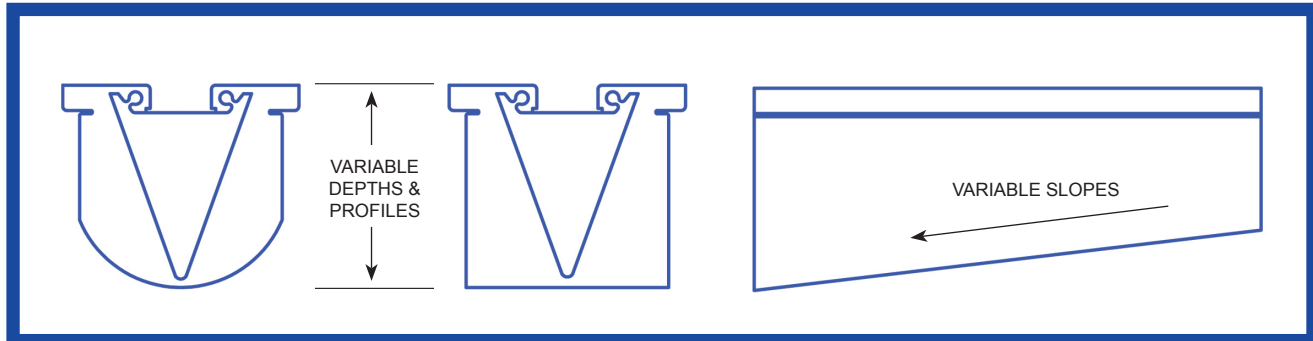


## TrenchFormer® MHD-A™

Heavy Duty Trench Drain Forming Systems

**Designed Right,  
Engineering that Saves...  
Life Safety, Life Cycle...**

### Pre-Engineered EPS Forms



MHD's EPS foam former design flexibility allows the designer to select various system slopes, depths and section profiles to meet their specific requirements, site restrictions and hydraulics.

#### Design Notes:

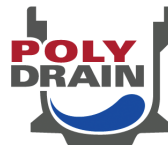
- Typical frame sections are 6.56' (2M). Frames are also available in 3.28' (1M) & 1.64' (0.5M).
- Auxiliary frames are available to facilitate "T's", "L's", intersections, radii and joints.
- All MHD system grates are 19.64" (0.5M) in length. Widths vary per system.

\*\* Call or E-mail us today for more information and design tools, go to [www.abtdrains.com](http://www.abtdrains.com).

- Hydraulic Design Guide
- ACAD Drawings & Details
- Specification Generator
- Additional Product Info
- PDF Catalogs & Details
- Installation Guides
- Plan Notes
- Performance Specifications

## Visit [www.abtdrains.com](http://www.abtdrains.com)

ABT designs and manufactures some of the most extensive, reliable, and versatile lines of channel drains, grates, and water management solutions in the industry. If you're an engineer or designer and need performance-based specifications and details for your project, we can help. Visit [www.abtdrains.com](http://www.abtdrains.com) for details on all our products.



#### ABT,® Inc.

PO Box 837  
259 Murdock Road  
Troutman, NC 28166  
[www.abtdrains.com](http://www.abtdrains.com)  
Toll-free: 800.438.6057  
Phone: 704.528.9806

DISCLAIMER: The customer and the customer's architects, engineers, consultants and other professionals are completely responsible for the selection, installation, and maintenance of any product purchased from ABT, and EXCEPT AS EXPRESSLY PROVIDED IN ABT'S STANDARD WARRANTIES, ABT MAKES NO WARRANTY, EXPRESS OR IMPLIED, AS TO THE SUITABILITY, DESIGN, MERCHANTABILITY, OR FITNESS OF THE PRODUCT FOR CUSTOMER'S APPLICATION. Copies of ABT's standard warranties are available upon request.

06/20/2023