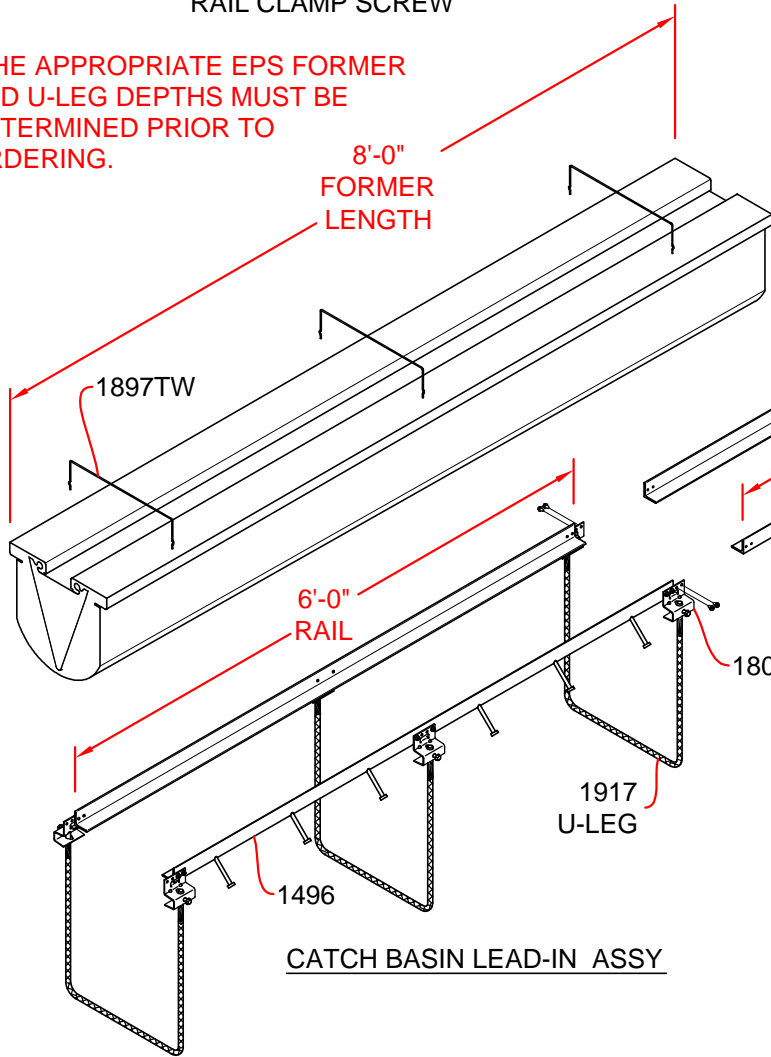


CATCH BASIN LEAD-IN

INCLUDES:

- (1) 10__* - EPS FOAM FORMER X 8'-0" LONG
- (2) 1496 - 6'-0" RAIL
- (2) 1492 - 2'-0" RAIL
- (3) 1917__* - REBAR U-LEG
- (3) 1897TW - CROSS TIE
- (6) 1802 - RAIL CLAMP
- (6) 1817 - 5/16-18 UNC X 3/4" REBAR SET SCREW
- (24) 1817.25 - 1/4-20 UNC X 3/8" RAIL CLAMP SCREW

*THE APPROPRIATE EPS FORMER AND U-LEG DEPTHS MUST BE DETERMINED PRIOR TO ORDERING.

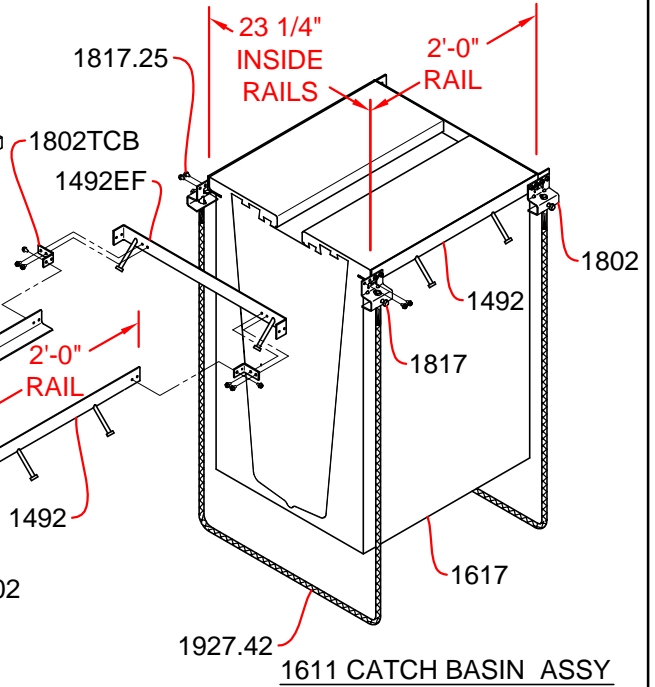


CATCH BASIN LEAD-IN ASSY

1611 CATCH BASIN

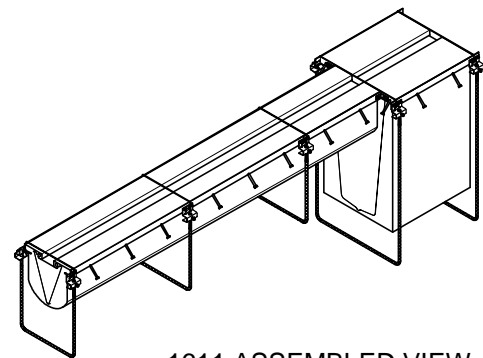
INCLUDES:

- (1) 1617 - 36" EPS CATCH BASIN FORMER
- (2) 1492 - 2'-0" RAIL
- (2) 1492EF - END FRAME
- (2) 1927.42 - 42" REBAR U-LEG
- (2) 1802TCB - BRACKET
- (4) 1802 - RAIL CLAMP
- (4) 1817 - 5/16-18 UNC X 3/4" REBAR SET SCREW
- (22) 1817.25 - 1/4-20 UNC X 3/8" RAIL CLAMP SCREW



1611 CATCH BASIN ASSY

*1604 CATCH BASIN GRATE NOT SHOWN FOR CLARITY



1611 ASSEMBLED VIEW

NOTES:

1. CONNECT THE TWO 1802TCB'S TO THE 1492 RAILS
2. CONNECT THE 2'-0" RAILS TO THE 6'-0" RAILS
3. INSERT FORMER AND CONNECT TO CATCH BASIN



P.O. BOX 837, 259 MURDOCK ROAD
TROUTMAN, NC 28166
(704) 528-9806

SPECIFICATION DRAWING © 2005 ABT, Inc.
TF-14 INSTALLATION
CATCH BASIN & LEAD-IN ASSEMBLIES

FILE: **S-1611-01**

PART: **1611, 1496, 1492**

Proprietary rights of ABT, Inc. are included in the information disclosed herein. The recipient, by accepting this document, agrees that neither this document nor the information disclosed herein nor any part thereof shall be copied, reproduced or transferred to others for manufacturing or for any other purpose except as specifically authorized in writing by ABT, Inc.

DISCLAIMER: The customer and the customer's architects, engineers, consultants and other professionals are completely responsible for the selection, installation, and maintenance of any product purchased from ABT, and EXCEPT AS EXPRESSLY PROVIDED IN ABT'S STANDARD WARRANTIES, ABT MAKES NO WARRANTY, EXPRESS OR IMPLIED, AS TO THE SUITABILITY, DESIGN, MERCHANTABILITY, OR FITNESS OF THE PRODUCT FOR CUSTOMER'S APPLICATION. Copies of ABT's standard warranties are available upon request.