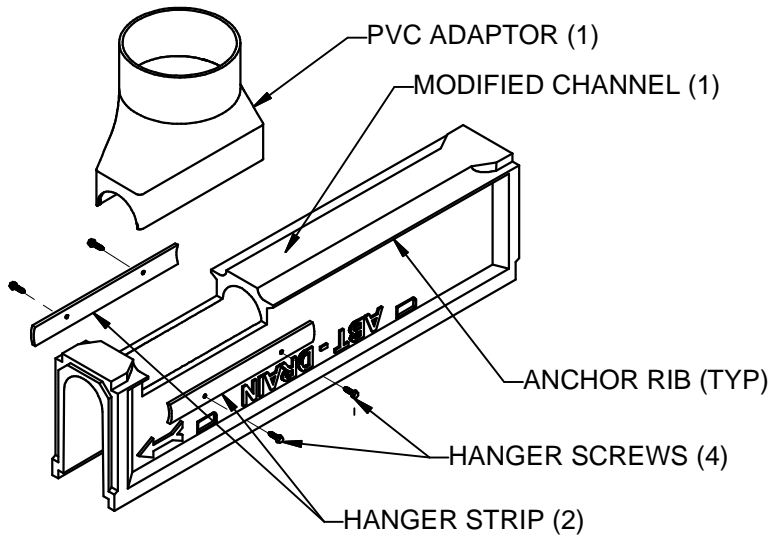
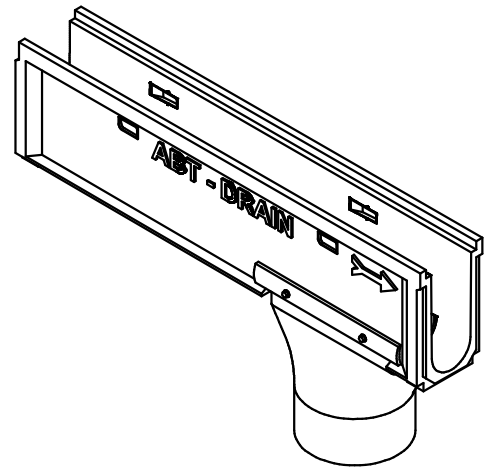


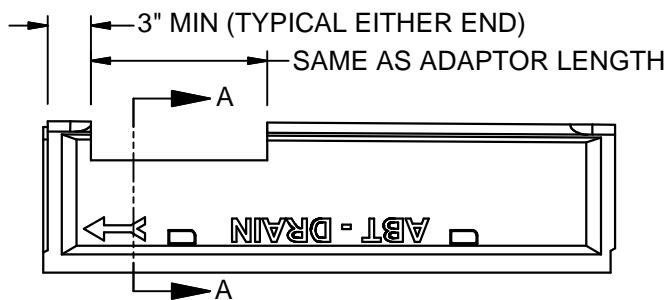
Ø8" & Ø12" PVC PIPE TO CHANNEL INSTALLATION INSTRUCTIONS



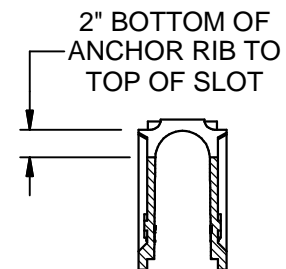
EXPLODED VIEW



ASSEMBLED VIEW



CHANNEL MODIFICATIONS



SECTION A-A

NOTES:

1. Cut opening in bottom of channel per "CHANNEL MODIFICATIONS" Diagram above using typical masonry cutting equipment.
2. Set PVC ADAPTOR into opening in MODIFIED CHANNEL.
3. Center HANGER STRIP in opening and against top surface of ANCHOR RIB.
4. Insert HANGER SCREW through hole in HANGER STRIP and drive screw into PVC ADAPTOR. Repeat for all screws. Cut screw penetrating PVC ADAPTOR as required after installation.
5. Caulk or tape over any openings between PVC ADAPTOR and CHANNEL as required to control concrete leakage.
6. Locate and align assembled unit in trench and connect piping.